

Uncertain Worlds Lessons From Pastoralists



UNCERTAINTY IS ALL AROUND.
HOW DOES PUBLIC POLICY RESPOND?



DOMINANT APPROACHES ARE OFTEN ABOUT EXERTING CONTROL - BY MEANS OF PLANS, REGULATIONS AND DEVELOPMENT INTERVENTIONS



INSTEAD OF ALWAYS TRYING TO CONTROL UNCERTAINTIES, WE COULD TAKE A MORE OPEN, CARING APPROACH.



PASTORALISTS ARE USED TO FACING UNCERTAINTIES - AROUND THINGS LIKE DROUGHT, FLOODS, PRICES, DISEASE OR CONFLICT.



PASTORAL AREAS ARE OFTEN MARKED BY MARGINALISATION -

THEY'RE OFTEN ON THE EDGE OF NATION-STATES, WITH A LACK OF STATE CONTROL AND SUPPORT.



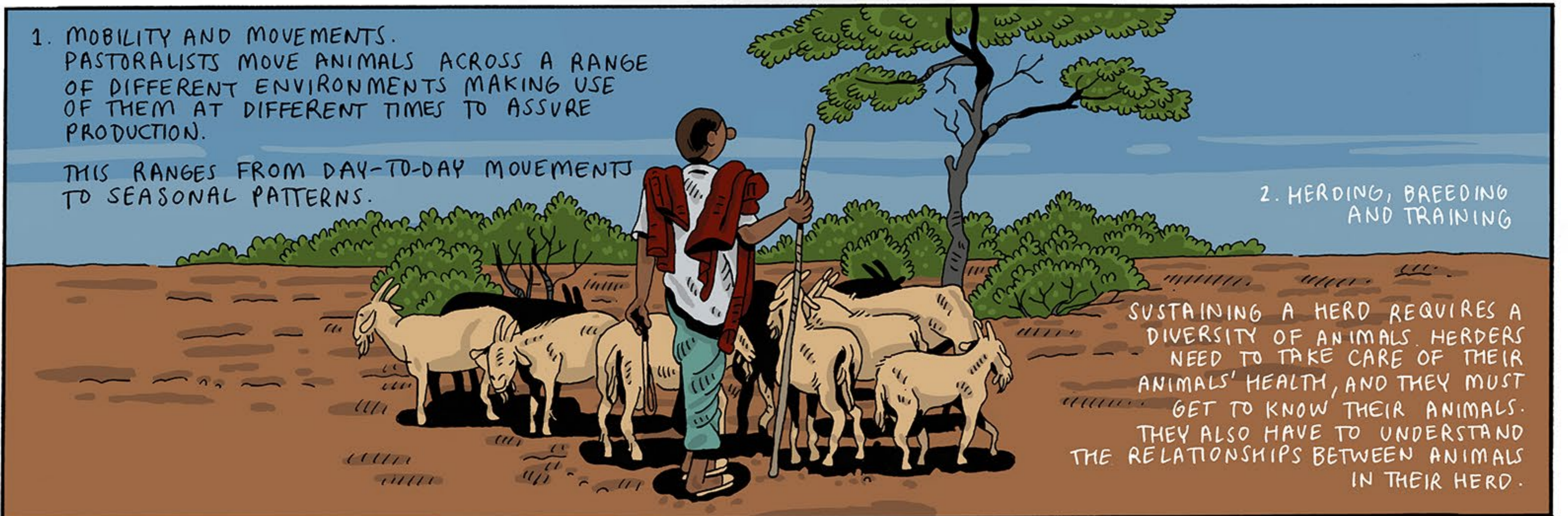
HOW DO PASTORALISTS RESPOND TO UNCERTAINTIES?

PASTORALISTS USE FOUR STRATEGIES TO MAKE THE MOST OF VARIABLE LANDSCAPES AND RESPOND TO CHANGES THEY CAN'T DIRECTLY CONTROL.



1. MOBILITY AND MOVEMENTS. PASTORALISTS MOVE ANIMALS ACROSS A RANGE OF DIFFERENT ENVIRONMENTS MAKING USE OF THEM AT DIFFERENT TIMES TO ASSURE PRODUCTION.

THIS RANGES FROM DAY-TO-DAY MOVEMENTS TO SEASONAL PATTERNS.



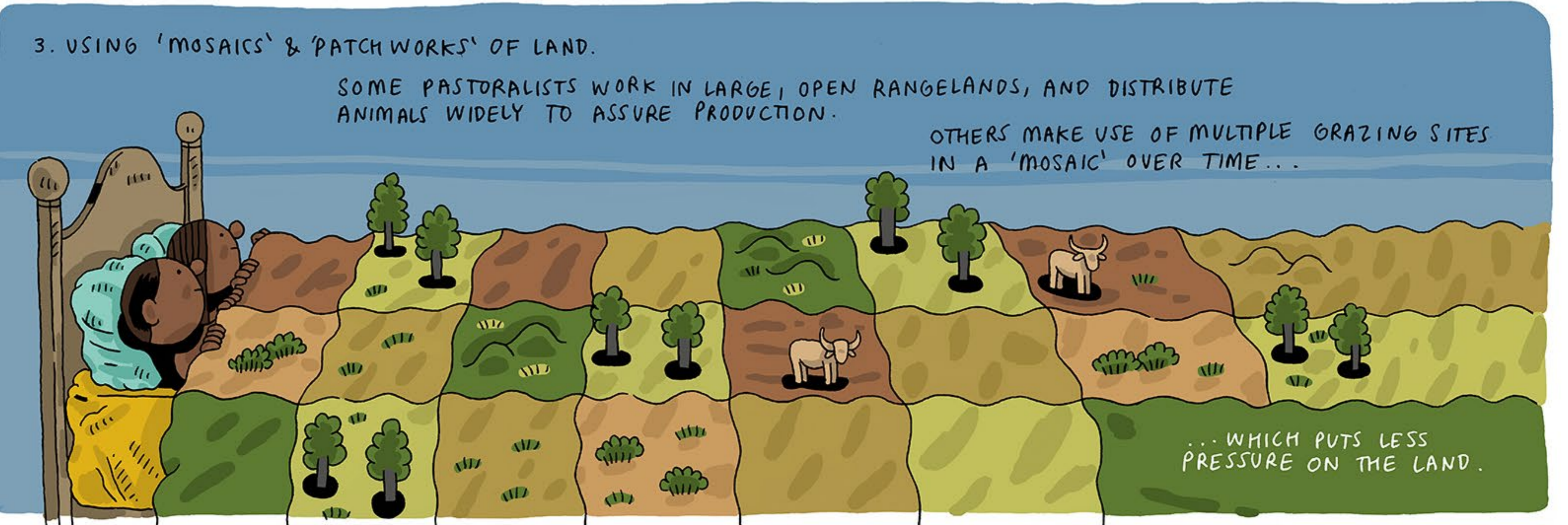
2. HERDING, BREEDING AND TRAINING

SUSTAINING A HERD REQUIRES A DIVERSITY OF ANIMALS. HERDERS NEED TO TAKE CARE OF THEIR ANIMALS' HEALTH, AND THEY MUST GET TO KNOW THEIR ANIMALS. THEY ALSO HAVE TO UNDERSTAND THE RELATIONSHIPS BETWEEN ANIMALS IN THEIR HERD.

3. USING 'MOSAICS' & 'PATCHWORKS' OF LAND.

SOME PASTORALISTS WORK IN LARGE, OPEN RANGELANDS, AND DISTRIBUTE ANIMALS WIDELY TO ASSURE PRODUCTION.

OTHERS MAKE USE OF MULTIPLE GRAZING SITES IN A 'MOSAIC' OVER TIME...

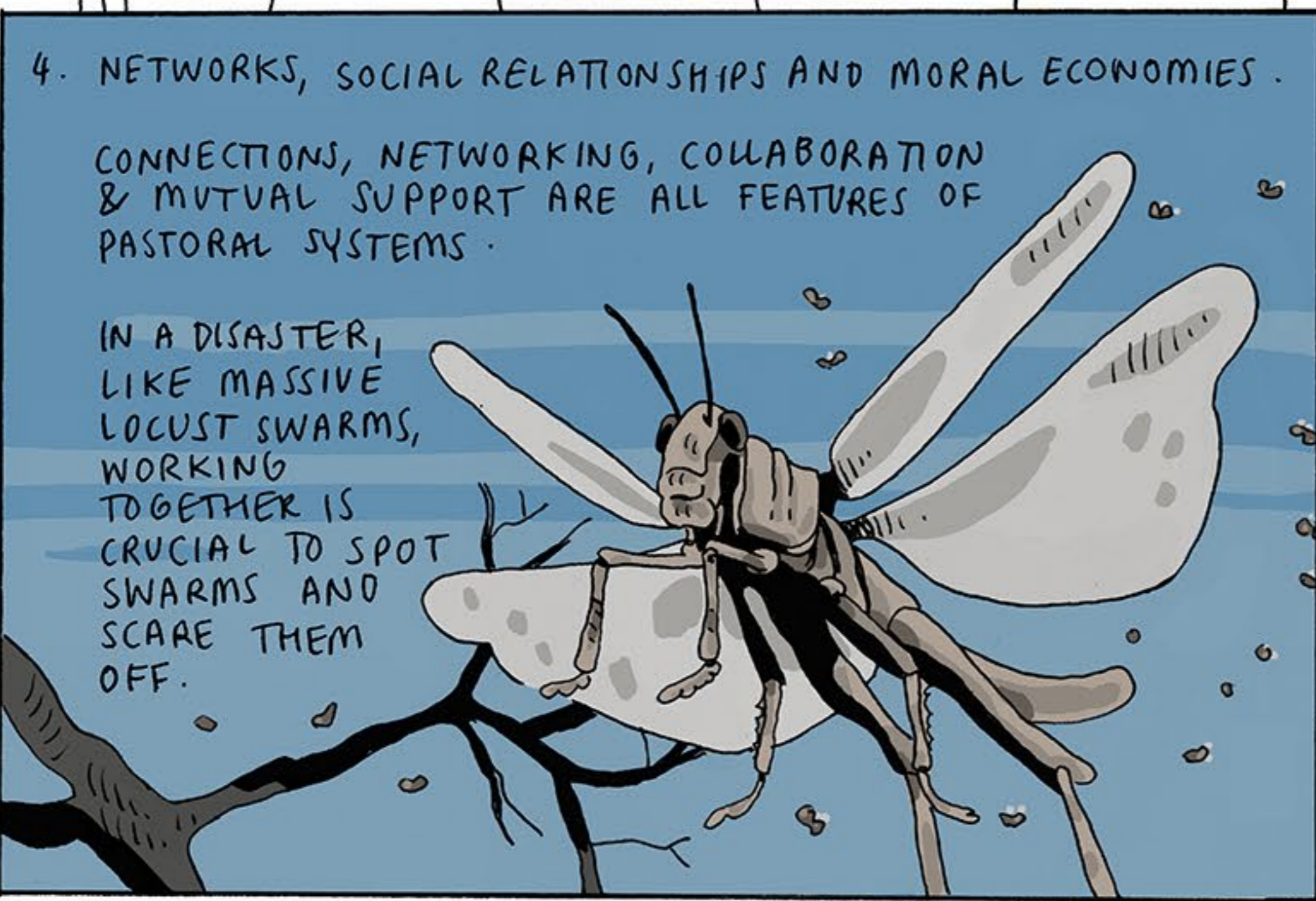


... WHICH PUTS LESS PRESSURE ON THE LAND.

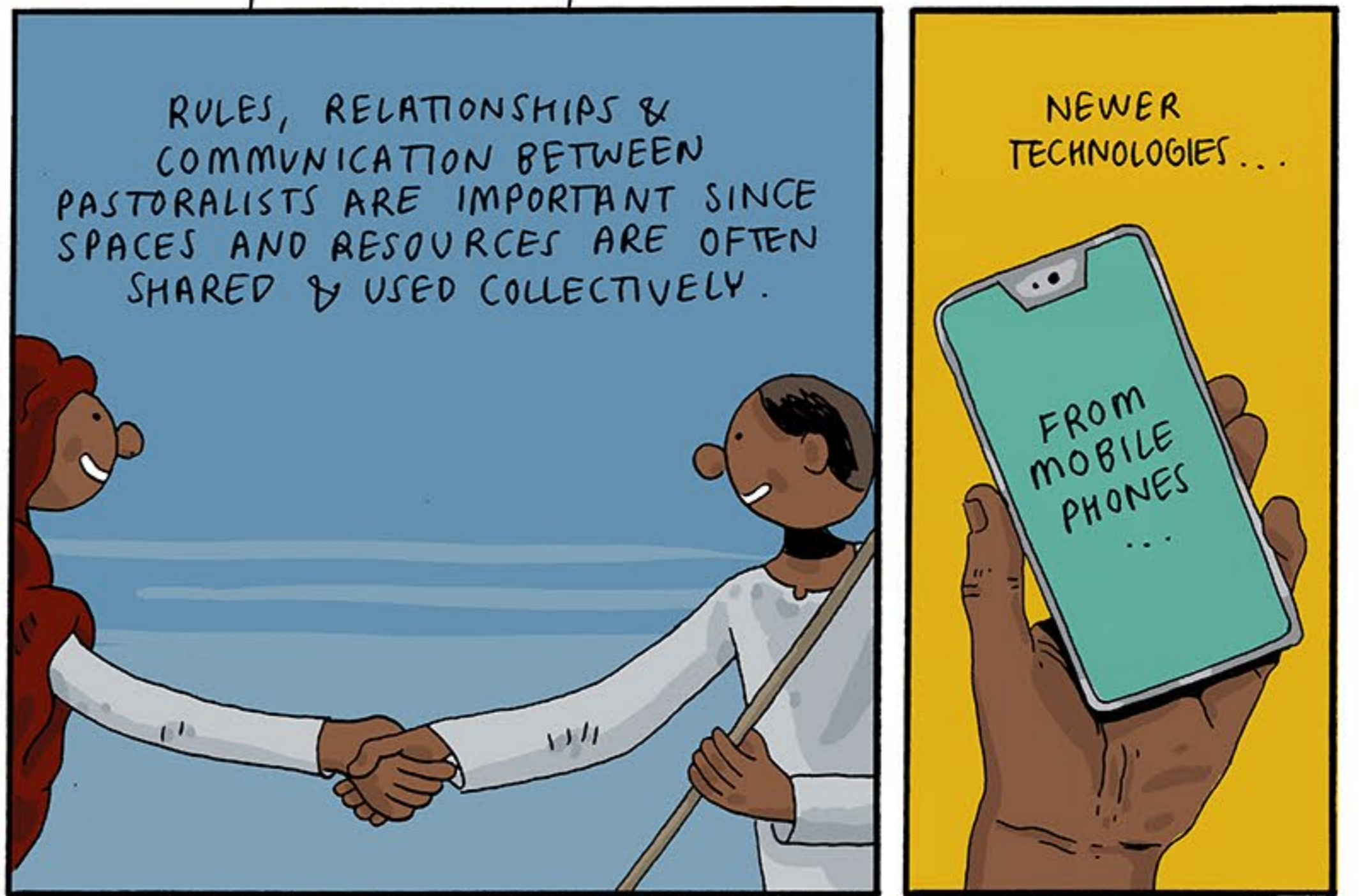
4. NETWORKS, SOCIAL RELATIONSHIPS AND MORAL ECONOMIES.

CONNECTIONS, NETWORKING, COLLABORATION & MUTUAL SUPPORT ARE ALL FEATURES OF PASTORAL SYSTEMS.

IN A DISASTER, LIKE MASSIVE LOCUST SWARMS, WORKING TOGETHER IS CRUCIAL TO SPOT SWARMS AND SCARE THEM OFF.



RULES, RELATIONSHIPS & COMMUNICATION BETWEEN PASTORALISTS ARE IMPORTANT SINCE SPACES AND RESOURCES ARE OFTEN SHARED & USED COLLECTIVELY.



NEWER TECHNOLOGIES...

... TO MOTORBIKES, CAN HELP KEEP PEOPLE IN TOUCH.



DEVELOPMENT POLICIES HAVE OFTEN LET PASTORALISTS DOWN BY SEEKING TO 'SETTLE' OR 'CIVILISE' THEM. BUT INSTEAD, THEY SHOULD RESPOND TO THE WAYS THEY ACTUALLY MOVE, CARE FOR ANIMALS, MANAGE LAND AND OPERATE THROUGH NETWORKS AND SOCIAL RELATIONS.

UNCERTAINTY IS A BIG DEAL FOR PASTORALISTS, BUT NOT JUST FOR THEM. IT'S A FEATURE OF MANY LIVELIHOODS AND SITUATIONS WORLDWIDE.

MOVING TOWARDS MORE 'CARE-BASED' APPROACHES MIGHT HELP US RESPOND TO UNCERTAINTY - RETHINKING HOW POLICIES ARE DEVELOPED AND CARRIED OUT.



USE THIS QR CODE TO LEARN MORE